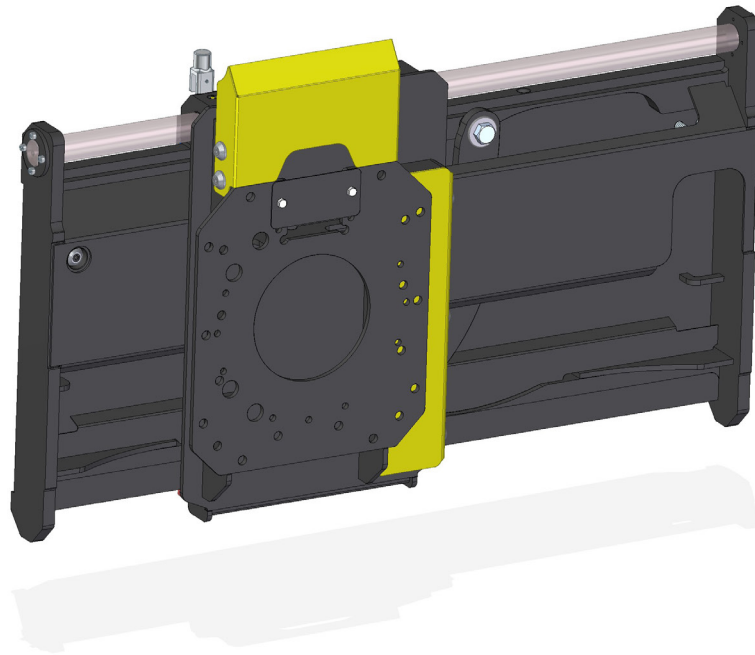


HYDRAULIC SIDE SHIFT MB-T150



SPECIFICATIONS

WEIGHT (lb) WITHOUT THE PULVERIZER	805
MAX OIL FLOW RATE (gal/min)	11 - 19
PRESSURE (PSI)	2,901 - 3,626
RECOMMENDED SKID STEER LOADER (lb)*	6,610 - 12,120

*The combined weight of the hydraulic side shift and the attached equipment must be assessed.

